

57.711853 °N

11.946160 °E



Living at Uni3 by Geely

Brochure for business visitors

uni3
by Geely

Where East

Meets West

Living at Uni3 by Geely

Catalogue

1. Uni3 by Geely	2
2. Facility service	3
2.1 Front Desk	3
2.2 Work pass.....	3
2.3 Entering Uni3 during non-working hours	3
2.4 Elevator	4
2.5 Fault report.....	4
2.6 Parking	4
2.7 Emergency.....	5
3. At Uni3	6
3.1 Conference & Events	6
3.2 Restaurants	6
3.3 Hotel	7
3.4 Convenience shop.....	8
3.5 Gym.....	8
4. Public transport and around Uni3	8

1. Uni3 by Geely

Uni3 by Geely is the first innovative and open campus invested and developed by Geely overseas, located in Gothenburg, Sweden. The campus covers a land area of 26,500 square meters with a total building area of 125,000 square meters, comprising six buildings and accommodating 3,500 workstations. It includes offices, laboratories, simulated driving rooms, ZEEKR / Lynk & Co Design Center, Lynk & Co International, as well as supporting facilities such as restaurants, Conference & Events, hotel, convenience shop, etc.

The architectural concept of Uni3 draws inspiration from the Chinese philosophy of the Five Elements: Metal, Wood, Water, Fire, and Earth. The external walls of the buildings use Swedish glass materials, blending both Eastern and Western design ideas to convey the concept of "where East meets West."

As an open, inclusive, and collaborative campus, Uni3 is dedicated to becoming Geely's leading innovation center worldwide. Currently, Uni3 has attracted many renowned tenants, including CEVT, Lynk & Co Design, Zeekr Design, Aurobay, United Spaces, Geely Sweden Holdings, Geely Europe Innovation and Collaboration AB, Volvo Cars Corporate, EcarX, InfiMotion, SiNIX, Compass Group, Combine, Toyota Material Handling, Lynk & Co International, Nordic Choice Hotel, among others.

Uni3 is managed and operated by Geely Europe Innovation and Collaboration AB.



2. Facility service

2.1 Front Desk

- Front Desk working hours:
Monday to Friday, 07:30 AM to 05:30 PM (excluding public holidays)
- Contact Information: +46 (010) 2040 650 ext. 1
frontdesk@uni3bygeely.com
- Services include:
The front desk offers a range of administrative support services, including visitor reception and guidance, prepare temporary work pass, visitor management, luggage and garment storage, taxi reservations, mailing services, Uni3 main switchboard calls, dry cleaning services, and plays a crucial role in facilitating communication with tenants



2.2 Work pass

- Access application
 - Uni3 work pass
Hosts are required to accompany visitors to the Uni3 Front Desk to fill out an application form and obtain a temporary work pass
 - Specific Company Work Pass
Visitors of CEVT, Lynk & Co Design, Zeekr Design, and Lynk & Co International should apply for and collect their work passes at the respective company's Reception.
- When entering Uni3, please ensure that you are wearing the work pass visibly
- Report lost work pass
 - If you found that your work pass is lost, please report it as soon as possible and request a replacement at either the Reception of the company you are visiting or at the Uni3 Front Desk. If you find another employee's work pass, please return it promptly to the Reception of the company or to the Uni3 Front Desk
- Leaving Uni3
For Uni3 business visitors, please leave your work pass at the Reception of the company you are visiting or at the Uni3 Front Desk on the day of departure

2.3 Entering Uni3 during non-working hours

If business visitors need to access Uni3 during non-working hours (0800-1700), please follow these steps:

- Contact the Reception of the company you are visiting in advance to confirm whether your access card has permission for non-working hours entry. If not, you will need to accompany the host to either the Reception of the company you are visiting or the Uni3 Front Desk to obtain access
- At the same time, we suggest inquiring with the Reception of the company you are visiting or the Uni3 Front Desk about any specific guidelines or precautions for visiting during non-working hours

2.4 Elevator

- The Uni3 main building has five elevator halls: A, B, C, D, and E. Before getting on the elevator, please select the desired floor button, and the elevator screen will display which elevator you will be taking. Each elevator hall is equipped with a disabled access elevator; simply press the disabled access button before selecting the floor
- In case of a fire alarm, all elevators will stop at the ground floor with doors open. Please use the stairs for evacuation
- The Design Center has three elevators, and Lynk & Co International has one elevator. In the event of a fire alarm, the same procedure as the Uni3 main building elevators will be followed
- If the elevator malfunctions, please call the Uni3 24-hour service phone: +46 (0)10-470 5080, or press and hold the communication button inside the elevator for assistance



2.5 Fault report

- You can report faults on the Uni3 official website, under the Tenants section: [For tenants - Uni3 by Geely](#)
- Alternatively, you can download the Uni3 mobile app to submit repair requests

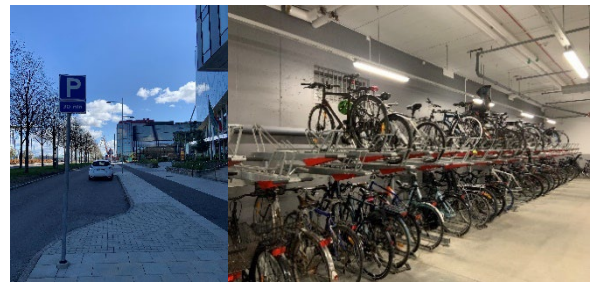


2.6 Parking

- Car parking
 - Uni3 provides rental parking spaces for tenants in the underground garage. For business visitors, please inquire with the company you are visiting about available parking spaces
 - For any parking-related issues, please promptly communicate them to the Uni3 Front Desk



- Bicycle and Motorcycle Parking
 - The entrance to the indoor bicycle parking area is located at Planetgatan 2
 - Bicycles, electric bicycles, and scooters should be parked in designated spaces with their frames securely fixed
 - Electric bicycles requiring charging can use the provided charging boxes in the parking area. Employees need to use their personal work passes to unlock and connect their charging boxes. After placing the battery inside, remember to close the box's door and turn the handle to secure the battery, as individual responsibility for battery safety is required
 - The indoor parking area offers a free air pump station for your convenience



- Temporary parking
 - There are several temporary parking spaces with a 30-minute limit around Uni3, suitable for quick drop-offs and pickups. Please note that exceeding the time limit may result in receiving a parking fine
- Other public parking spaces
 - If you need public parking spaces, you can search for parking near Uni3 on the Gothenburg City Council's parking website at [Hitta parkering | Parkering Göteborg \(parkeringgoteborg.se\)](https://parkeringgoteborg.se). The approximate price is around 22 SEK per hour.
 - If you need to lease a long-term public parking space, you can also apply on the Gothenburg City Council's parking website [Östra Lindholmen \[3313\] \(parkeringgoteborg.se\)](https://parkeringgoteborg.se). The approximate monthly price is 1050 SEK

2.7 Emergency

- Fire alarm

When the fire alarm sounds, please evacuate the campus buildings quickly and orderly. Proceed to the assembly point near the Clarion Hotel the Pier by the dock: Hugo Hammars Quay. Do not use elevators during a fire alarm; use the stairs for evacuation
- AED (Automated External Defibrillator) units are available at the main building Front Desk and the conference centre for emergency cardiac resuscitation.
- Uni3 24-Hour Property Service Phone: +46 (0)10-470 5080
- In case of life-threatening emergencies, please dial the Swedish emergency number 112



3. At Uni3

3.1 Conference & Events

- Conference Centre
 - Uni3 Conference Centre is located on the first and tenth floors of the main building, offering various types of meeting and event spaces for 1 to 600 people
 - We also provide comprehensive end-to-end services for multinational groups, including visa assistance, accommodation, event planning, and execution. The events we can hold, for examples, seminars, conferences, technical launches, new vehicle launches, media receptions, live-streaming, etc
 - Contact Information: +46 (010) 2040650, Extension 2
Email: booking@uni3byeely.com



- Events
 - Uni3 hosts various online and offline events periodically, including seminars, lunch&learn, innovation talk, and celebrations of major Sino-Swiss holidays
 - The main venues for these events are within the Uni3 Conference Centre, including The Theatre and The Auditorium.
 - Information about these events can be found on Uni3 public screens, elevator posters, the Uni3 mobile app, and can also be subscribed to on the [Uni3 website](#) for staying up-to-date with Uni3's latest happenings. Visit "[News & Happenings - Uni3 by Geely](#)" and click "Follow" to subscribe



3.2 Restaurants

There are five restaurants and cafés, along with five self-service vending machines, at Uni3 campus

- World of Food
 - A diverse dining establishment that offers a menu inspired by the five elements – Metal, Wood, Water, Fire, and Earth – with a primary focus on Swedish flavors. The menu changes weekly and can be viewed on [Menu - CompassGroup.se](http://Menu-CompassGroup.se) (compass-group.se)
 - You can conveniently place orders directly at the self-ordering kiosks in the restaurant or use the Uni3 App for ordering
 - Outside meal times, the bar provides coffee, beverages, and snacks
 - The average cost per person is approximately 119 Swedish Krona



- da Matteo
 - Gothenburg's Premier Café
 - Apart from coffee, the café also serves breakfast and lunch options such as salads, sandwiches, and pizzas
 - Membership cards are available, offering a 10% discount
 - Lunch prices range from approximately 100 to 150 Swedish Krona

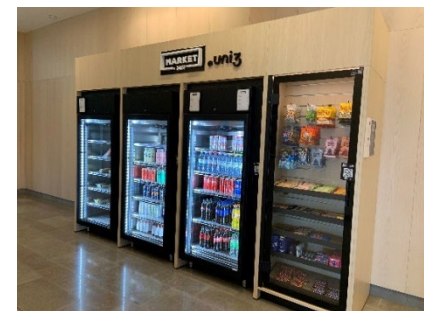
- Gansu Köket
 - Authentic Gansu-style Noodles, serving lunch only
 - Offers dishes like beef noodles, fried sauce noodles, dumplings, and rice with toppings
 - Average cost per person is approximately 100-150 Swedish Krona



- FEI
 - Gothenburg's Most Popular Upscale Chinese Restaurant, also the only restaurant in Gothenburg serving Chinese premium baijiu like Maotai and Wuliangye
 - Authentic Chinese cuisine infused with Western Michelin techniques, providing an exceptional setting for hosting distinguished guests
 - Located on the 10th floor of the Clarion Hotel the Pier within the Uni3 campus, with direct access to the rooftop terrace bar, offering panoramic views of the Göta River and the old city of Gothenburg
 - Due to high demand, advance reservations are required at [Fei – Chinese restaurant and meeting-place \(feirestaurant.com\)](http://feirestaurant.com).
 - For special arrangements during events, please liaise with the restaurant manager, Contact: Mr. Tengxiang, Phone: 073-656 34 71
 - Open only for dinner from Tuesday to Saturday
 - Average cost per person is approximately 700-2000 SEK.



- Uni3 vending machine
 - Within the Uni3 main building, there are two 24/7 market self-service vending machines and one Convini vending machine
 - The Geely Design and Lynk & Co offices each have a 24/7 market self-service vending machine
 - The 24/7 market vending machines offer not only breakfast and lunch items but also beverages and daily essentials like sanitary pads. Purchases can be made directly through the Uni3 App.
 - The Convini vending machine primarily sells food items and requires downloading the Convini App for purchases



3.3 Hotel

- Clarion Hotel the Pier is a high-quality four-star hotel within the campus (Gothenburg's highest star rating is four stars). It's situated by the Göta River, offering picturesque river views
- The hotel boasts 254 rooms, including standard, deluxe, and executive suites. Additionally, there are furnished apartments available for short and long-term stays, catering to business trips and relocated employees, offering a hassle-free move-in experience
- Hotel prices range from approximately 1100 to 3000 Swedish Krona per night
- Website: [Hotel in Gothenburg | Clarion Hotel The Pier | Strawberry \(strawberryhotels.com\)](#)



3.4 Convenience shop

- Blommiga tider, is an Asian convenience shop within the campus. Here, you can find a range of products including fresh fruits, vegetables, Asian groceries, and breakfast/lunch items like tofu pudding, soy milk, tea eggs, baozi, and grilled sausages. They also offer authentic Taiwanese-style milk tea
- Opening Hours: Weekdays 09:00-18:00, Saturdays 10:00-18:00



3.5 Gym

- On the floor 0 of the main building, there is a 225 m² SATS fitness center exclusively for Uni3 employees. In addition to a comprehensive range of fitness equipment, personal training and group fitness classes can be reserved through the SATS app. For specific membership details, refer to: [Welcome Uni3 \(sats.se\)](#)
- Operating Hours: Weekdays 05:00-22:00



4. Public transport and around Uni3

The Uni3 campus is located within the Lindholmen Science Park area, which serves as Gothenburg's CBD. It's a hub for various innovative enterprises and university campuses, including Volvo Cars, Volvo Group, Ericsson, Chalmers University of Technology, and more. The surrounding area offers a comprehensive range of amenities, including supermarkets, convenience stores, diverse restaurants, residential areas, and even bakeries.

- Supermarket
 - ICA Kvantum Sannegården
 - Address: Vintergatan 4, 41758, Gothenburg
 - ICA is one of the leading supermarket brands in Sweden, along with Coop, Willys, Hemköp, and Lidl. It offers a wide variety of products.
- Transport

- There is a nearby bus stop in the Uni3 campus area named "Pumpgatan." Buses like 16, 21, 45, and 58 provide connections to the city center and various directions
- A 10-minute walk will take you to the Lindholmospiren, where you can catch the ferry 286(free) or ferry 285 to Stenpiren.

Uni3 Campus Address: Pumpgatan 1, 41755, Gothenburg

Friendly reminder: During your stay in Sweden, we kindly ask everyone to adhere to local laws and regulations, and prioritize personal safety.

Feel free to follow Uni3 on social media platforms ([LinkedIn](#), [Facebook](#), [Instagram](#)). We hope everyone enjoys a delightful time at the Uni3 campus!

Living at Uni3 contact person: **Tingting Niu**

+46 0731441615

Tingting.niu@geelycentre.com